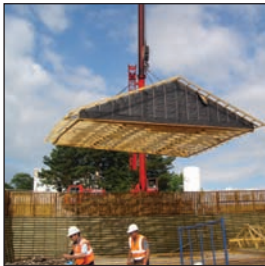


## Scaffold - Free Erection



<b>Location:</b>	Canniesburn, Glasgow
<b>Client:</b>	CALA Homes Ltd
<b>Construction method:</b>	Platform Timber Frame
<b>Size:</b>	18 units, large 3 storey detached town houses
<b>Construction period per unit:</b>	<ul style="list-style-type: none"> <li>• Roof built on slab – 1 week (including felt and battens by others)</li> <li>• Structural frame – 2 days</li> <li>• Sundry timbers &amp; ancillaries – 1 day</li> </ul>
<b>Unique features:</b>	Erection of timber frame structures without scaffold

The project challenge was to remove the scaffold erection from the critical path of timber frame erection, as well as save money on scaffold hire.

Oregon responded to this challenge by using an innovative Research & Development process to develop an edge protection system within factory built floor cassettes.

This system saved two weeks of scaffold hire per unit, and all frames were erected without scaffold – at no additional cost to the client.

### Benefits:

- Reduces cost
- Removes scaffold erection from the critical path
- Improves accuracy of scaffold erect (as timber frame in situ)

*“By saving 2 weeks scaffold hire time per unit, Oregon’s Scaffold Free Erection System delivered significant savings on our prelim costs. And, because scaffold was off the critical path, we weren’t reliant on other trades, so we got an altogether better build programme. I’d certainly recommend it.”*

**Tam Wylie – Site Manager, CALA Homes (West) Ltd.**

For a full Health & Safety report please contact Oregon Timber Frame Ltd.

**Delivering safe, sustainable solutions for today’s construction industry**